

**Rock Hill Schools
Rock Hill, South Carolina
Cabling Upgrades
RFP # 23-2412 RHSD (RHSD-2024-001)**

Addendum One – February 13th, 2024

Following are changes, additions, deletions, clarification, or additional information to the RFP. All addenda are considered a component of the RFP.

Changes / Clarifications to the RFP:

None.

Walk –Through Notes:

The following notes (**N1-N10**) and the **02.08.2024 Walk Through Packet** address questions asked/responses given, additional project details, and/or items of interest that were identified as a result of the Pre-Bid Walk Through on February 8th, 2024.

N1: Can RHSD specify which building areas/cabling runs are to be quoted to use Plenum rated cabling and non-Plenum rated cabling?

N1 Response: RHSD requires exclusively Plenum-rated cabling to be quoted for this project.

N2: Will we have to quote for a lift?

N2 Response: RHSD will not be able to let vendors utilize their in-house lifts, ladders, or any other tools. It is up to the vendor to determine what tools such as a lift are necessary to complete this project during the visual walk through process.

N3: Will any Wireless Access Points be added, or repositioned; do you have any outdoor WAPs?

N3 Response: RHSD is not installing additional(new) Access Points as part of this project and no WAPs will be repositioned. RHSD currently does not have any outdoor WAPs.

N4: It is specified the vendor is to utilize existing infrastructure. If the awarded vendor finds existing infrastructure for cable support is not up to code on the job, how do we quote for "J-Hooks" or "Risers" for example?

N4 Response: RHSD does specify on page 22 of the RFP "Use existing raceway and cabling trays. Cable conduit may need replacing, or additional cable conduit may be required to accommodate the thicker CAT6A cabling." To add further clarification the vendor is to utilize all existing cable support infrastructure unless it is absolutely necessary to upgrade infrastructure to run the thicker CAT6A cabling. The vendor also must complete the job in accordance with building codes. Do not include "J-Hooks" or "Risers" in your initial bid proposal. If on-the-job modifications must be made to comply with code the awarded vendor must specify the additional equipment as individual line items noted with "needed by code" as a change order/addition. The vendor must provide a report of where code compliances were necessary and made.

N5: Is the vendor to use type "A" or "B" cable termination?

N5 Response: RHSD asks the vendor to use type "B" termination for this project.

N6: Do you have additional site map drawings to show firewalls, plumbing, electrical etc. ?

N6 Response: RHSD will provide the awarded vendor with any additional drawings of plumbing, electrical, etc. that we have at our disposal.

N7: Does the awarded vendor receive an up-front deposit for this job?

N7 Response: No, RHSD will not issue an up-front deposit for this project.

N8: Do installation labor and demolition labor need to be quoted as separate line items?

N8 Response: Yes. Per the requirements of the RFP, all costs must be itemized and further detailed by each entity location. In addition, materials and labor must be quoted separately.

N9: Does the District have extra ceiling tiles to replace in case of damage?

N9 Response: RHSD will not be able to provide spare ceiling tiles. As specified in the RFP page 26 "The vendor will be responsible for repair of all damage to the building due to the negligence of its workers."

N10: When does RHSD need this project started and completed, and what are the available work hours?

N10 Response: RHSD prefers this project to be completed over our District's coming summer break. However, if the project drags into next school year the project may need to continue over weekends, or evenings incrementally until completion. We will work to be flexible with work hours. We ask to prioritize the High School sites before the Middle Schools. Though we will need to work with the awarded vendor to not interfere with waxing, summer school, and other events. The RHSD project manager will ensure the awarded vendor has proper access to the facilities (badges and keys).

Walk-through: Thursday February 8th 2024 @ 9:00am

Rock Hill School District CAT6A Re-Cabling for Access Points Project

RFP# 23-2412 (RHSD-2024-001)

Agenda (Schools to visit) 4x MIDDLEs & 3x HIGHs

1. Rawlinson Road MIDDLE (79~APs)
2631 West Main Street, Rock Hill, SC 29732

2. Northwestern HIGH (133~APs)
2503 West Main Street, Rock Hill, SC 29732

3. Dutchman Creek MIDDLE (80~APs)
4757 Mount Gallant Road, Rock Hill, SC 29732

4. Sullivan MIDDLE (89~APs)
1825 Eden Terrace, Rock Hill, SC 29730

5. Rock Hill HIGH (143~APs)
320 West Springdale Road, Rock Hill, SC 29730

6. Castle Heights MIDDLE (74~APs)
2382 Firetower Road, Rock Hill, SC 29730

7. South Pointe HIGH (135~APs)
801 Neely Road, Rock Hill, SC 29730

RFP Release Date	Friday, January 26 th , 2024
Mandatory Pre-Bid Walk Through	Thursday, February 8 th , 2024 @ 9:00 AM
Deadline for Questions	Thursday, February 15 th , 2024 @ 11:00 AM
Deadline for Receipt of Bid Responses	Thursday, February 29 th , 2024 @ 11:00 AM

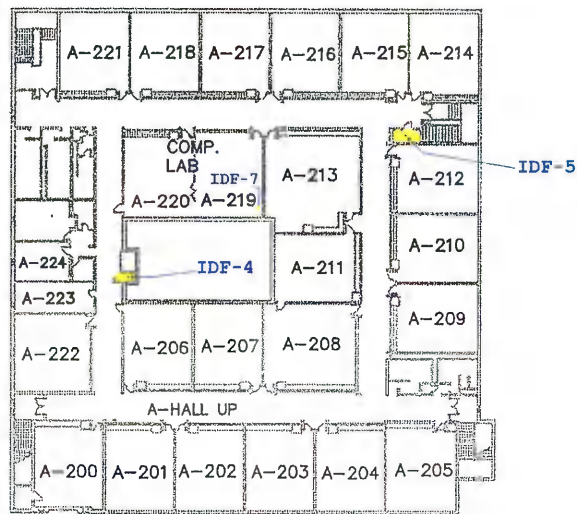
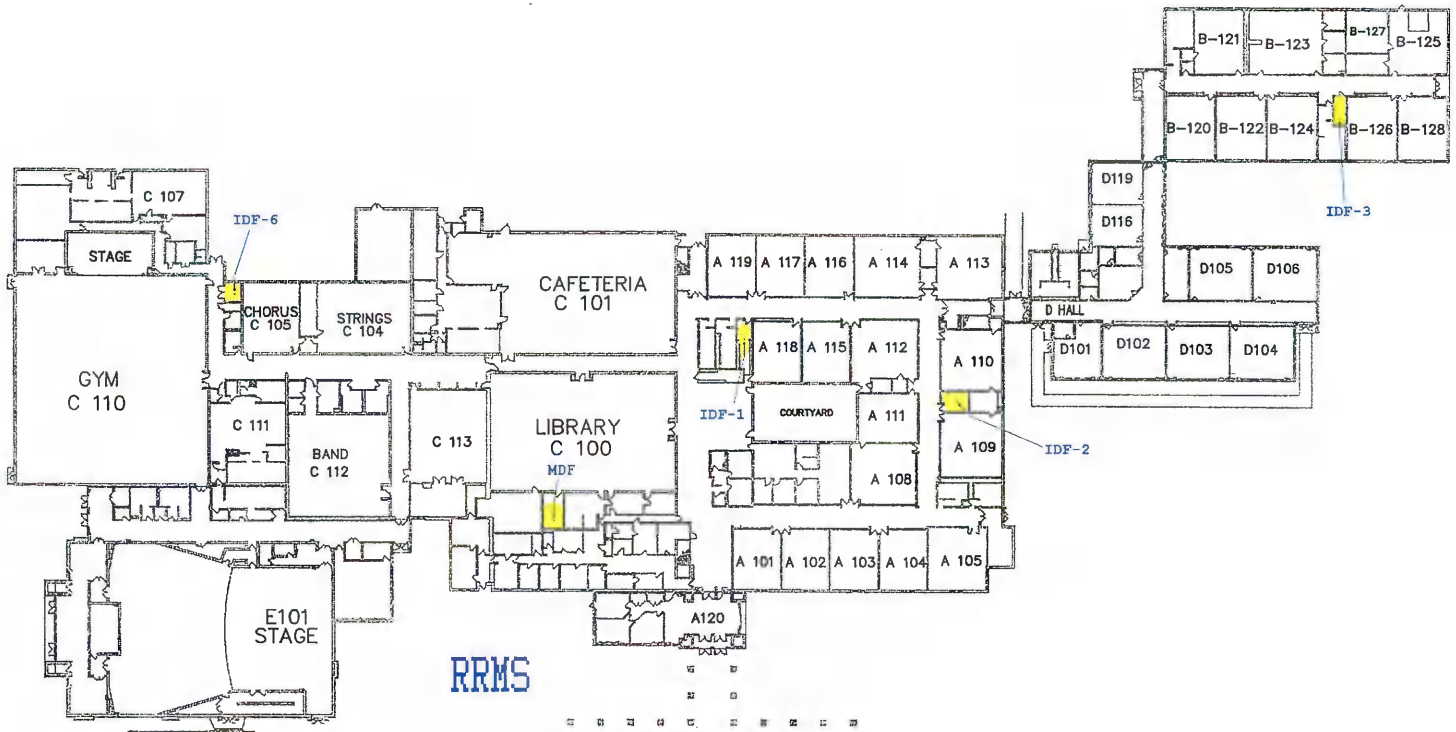
RHSD Networking Personnel:

RHSD Director of Network Engineering: **Benjie Young**

RHSD Network Engineer: **Nate Rambo**

RHSD Network Engineering Coordinator: **Quinton Daniel**

Rawlinson Road Middle School

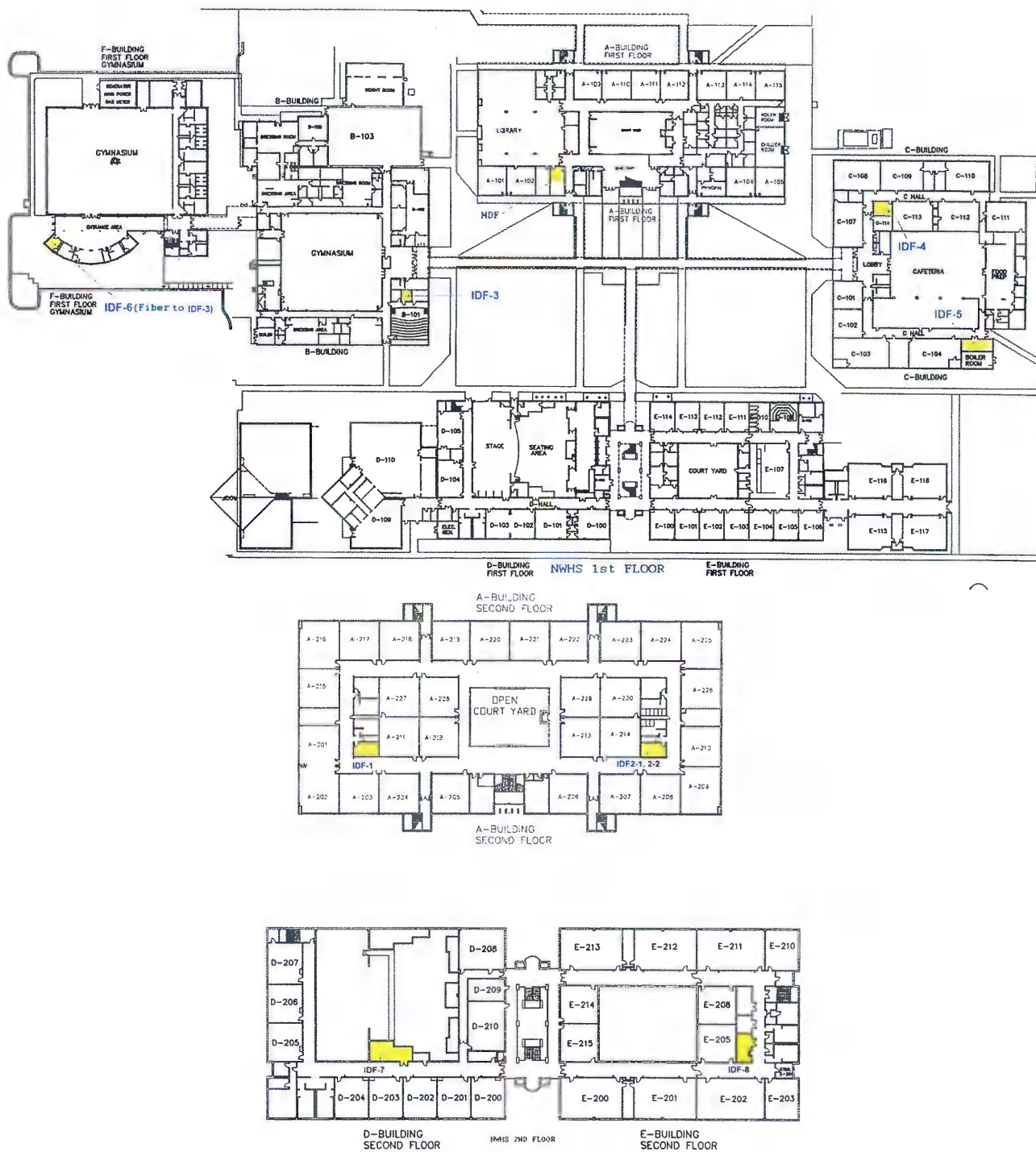


A-BUILDING
SECOND FLOOR

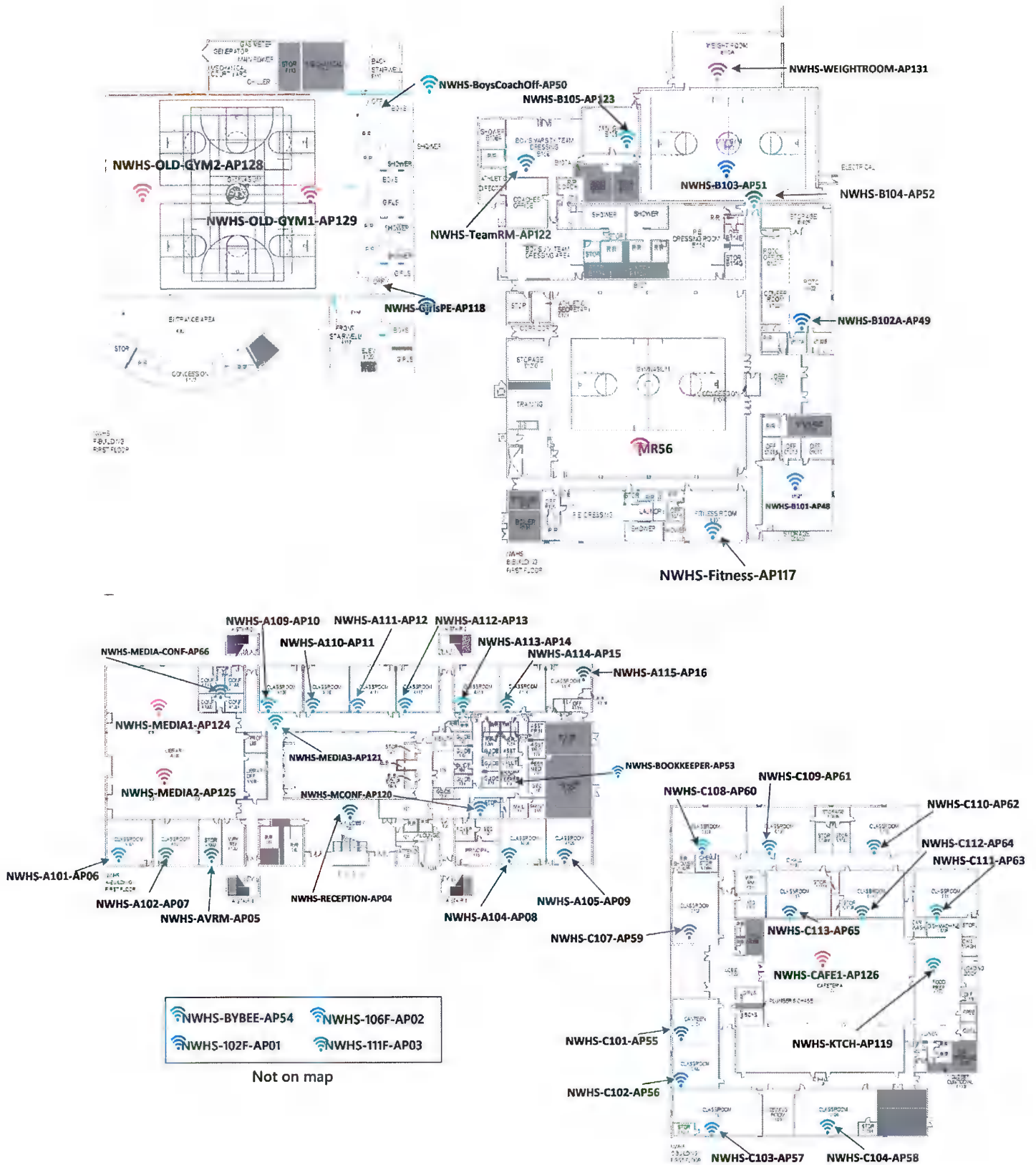


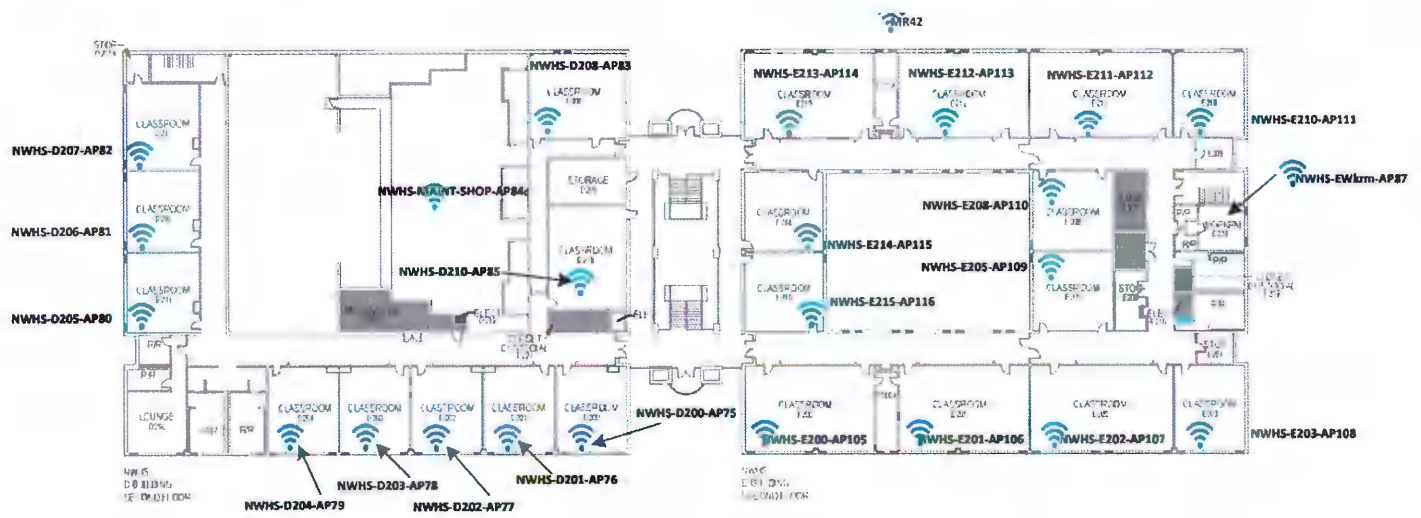
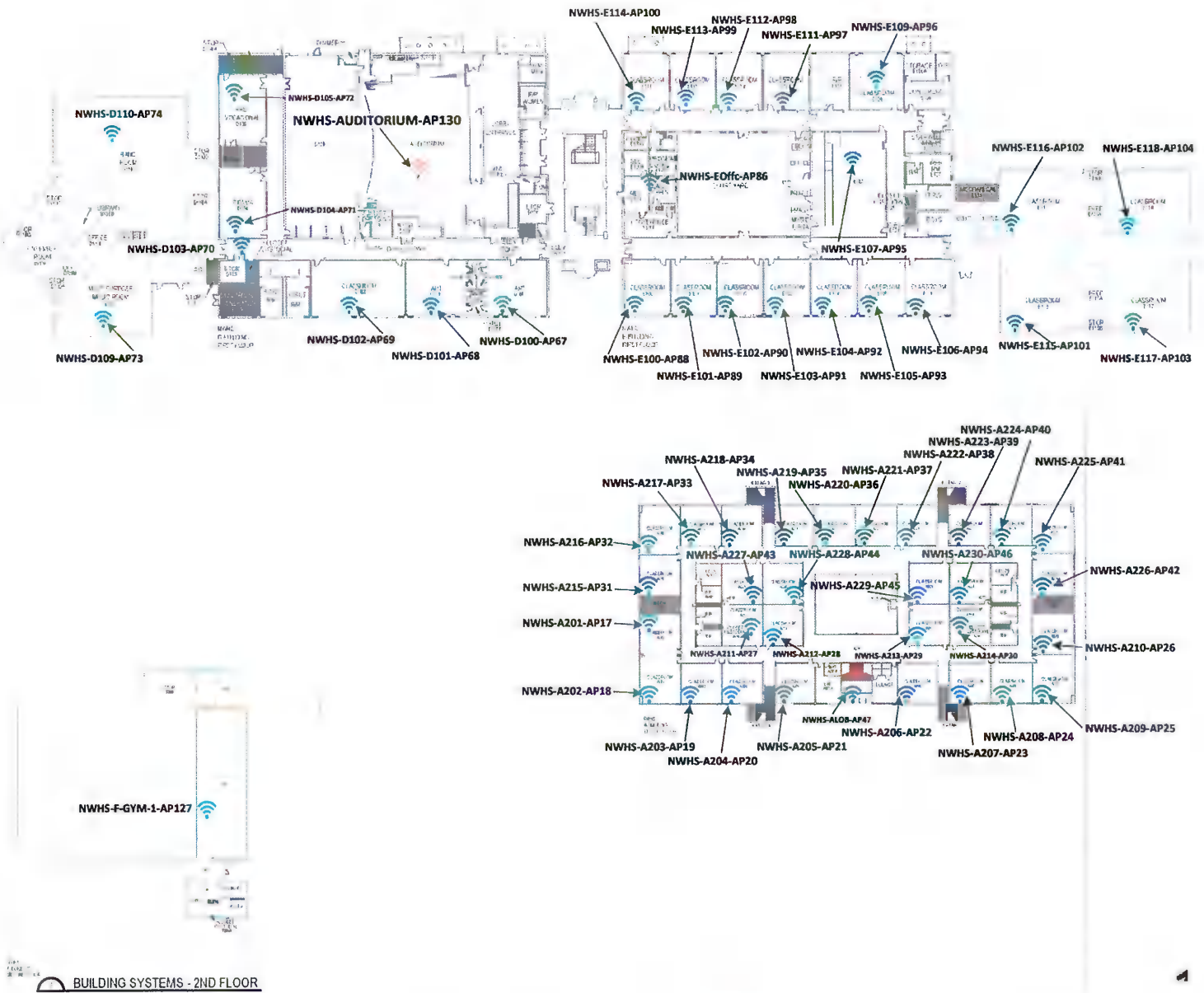
Name	Model	Ethernet 1 LLDP	Closet & # of Runs	
RRMS-A117-AP20	MR46	RRMS-IDF1-MS355-SW1(DATA) / Port 34	IDF 1 : 8~	RRMS-A206-AP56
RRMS-A115-AP22	MR46	RRMS-IDF1-MS355-SW1(DATA) / Port 36		RRMS-A219-AP72
RRMS-CAFE1-AP17	MR56	RRMS-IDF1-MS355-SW1(DATA) / Port 38		RRMS-A223-AP77
RRMS-A112-AP25	MR46	RRMS-IDF1-MS355-SW1(DATA) / Port 40		RRMS-A218-AP74
RRMS-A113-AP26	MR46	RRMS-IDF1-MS355-SW1(DATA) / Port 42	IDF 2 : 11~	RRMS-A202-AP58
RRMS-A116-AP23	MR46	RRMS-IDF1-MS355-SW1(DATA) / Port 44		RRMS-A217-AP71
RRMS-A118-AP21	MR46	RRMS-IDF1-MS355-SW1(DATA) / Port 46		RRMS-A221-AP75
RRMS-A119-AP19	MR46	RRMS-IDF1-MS355-SW1(DATA) / Port 48		RRMS-A212-AP67
RRMS-A111-AP28	MR46	RRMS-IDF2-MS355-SW1(DATA) / Port 33	IDF 3 : 17~	RRMS-A215-AP69
RRMS-A114-AP24	MR46	RRMS-IDF2-MS355-SW1(DATA) / Port 34		RRMS-A209-AP63
RRMS-A110-AP27	MR46	RRMS-IDF2-MS355-SW1(DATA) / Port 35		RRMS-A211-AP64
RRMS-A104-AP32	MR46	RRMS-IDF2-MS355-SW1(DATA) / Port 36		RRMS-A204-AP61
RRMS-A102-AP34	MR46	RRMS-IDF2-MS355-SW1(DATA) / Port 37	IDF 4 : 10~	RRMS-A205-AP62
RRMS-GUIDANCE-AP51	MR46	RRMS-IDF2-MS355-SW1(DATA) / Port 38		RRMS-A208-AP60
RRMS-A101-AP35	MR46	RRMS-IDF2-MS355-SW1(DATA) / Port 39		RRMS-A210-AP65
RRMS-A103-AP33	MR46	RRMS-IDF2-MS355-SW1(DATA) / Port 40		RRMS-A213-AP66
RRMS-A105-AP31	MR46	RRMS-IDF2-MS355-SW1(DATA) / Port 41	IDF 5 : 13~	RRMS-A216-AP70
RRMS-A108-AP30	MR46	RRMS-IDF2-MS355-SW1(DATA) / Port 42		RRMS-A214-AP68
RRMS-A109-AP29	MR46	RRMS-IDF2-MS355-SW1(DATA) / Port 43		RRMS-GYM1-AP11
RRMS-D116-AP43	MR46	RRMS-IDF3-MS355-SW1(DATA) / Port 32		RRMS-AUDITORIUM-AP16
RRMS-D106-AP40	MR46	RRMS-IDF3-MS355-SW1(DATA) / Port 33	IDF 6 : 14~	RRMS-C104-AP09
RRMS-D103-AP38	MR46	RRMS-IDF3-MS355-SW1(DATA) / Port 34		RRMS-CAFE2-AP18
RRMS-D101-AP36	MR46	RRMS-IDF3-MS355-SW1(DATA) / Port 35		RRMS-C113-AP07
RRMS-B128-AP49	MR46	RRMS-IDF3-MS355-SW1(DATA) / Port 36		RRMS-C105-AP10
RRMS-B122-AP46	MR46	RRMS-IDF3-MS355-SW1(DATA) / Port 37	IDF 7 : 7~	RRMS-C107-AP73
RRMS-B121-AP53	MR46	RRMS-IDF3-MS355-SW1(DATA) / Port 38		RRMS-C112-AP08
RRMS-D102-AP37	MR46	RRMS-IDF3-MS355-SW1(DATA) / Port 39		RRMS-C111-AP76
RRMS-D-HALLWAY-AP42	MR56	RRMS-IDF3-MS355-SW1(DATA) / Port 40		RRMS-GYM2-AP12
RRMS-D105-AP41	MR46	RRMS-IDF3-MS355-SW1(DATA) / Port 41	IDF 8 : 8~	RRMS-E-HALLWAY-AP13
RRMS-D119-AP44	MR46	RRMS-IDF3-MS355-SW1(DATA) / Port 42		RRMS-E100-AP79
RRMS-B124-AP47	MR46	RRMS-IDF3-MS355-SW1(DATA) / Port 43		RRMS-AUDI-LOBBY-AP14
RRMS-D104-AP39	MR46	RRMS-IDF3-MS355-SW1(DATA) / Port 44		RRMS-A-CONTRL-RM-AP15
RRMS-B123-AP52	MR46	RRMS-IDF3-MS355-SW1(DATA) / Port 45	IDF 9 : 9~	RRMS-MEDIA1-AP05
RRMS-B120-AP45	MR46	RRMS-IDF3-MS355-SW1(DATA) / Port 46		RRMS-OFFICE04-AP04
RRMS-B125-AP50	MR46	RRMS-IDF3-MS355-SW1(DATA) / Port 47		RRMS-MEDIA2-AP06
RRMS-B126-AP48	MR46	RRMS-IDF3-MS355-SW1(DATA) / Port 48		RRMS-OFFICE03-AP03
RRMS-A222-AP78	MR46	RRMS-IDF4-MS355-SW1(DATA) / Port 39	IDF 10 : 10~	RRMS-OFFICE01-AP01
RRMS-A207-AP57	MR46	RRMS-IDF4-MS355-SW1(DATA) / Port 40		RRMS-OFFICE02-AP02
RRMS-A203-AP59	MR46	RRMS-IDF4-MS355-SW1(DATA) / Port 41		
RRMS-A201-AP55	MR46	RRMS-IDF4-MS355-SW1(DATA) / Port 42		
RRMS-A200-AP54	MR46	RRMS-IDF4-MS355-SW1(DATA) / Port 44		

Northwestern High School

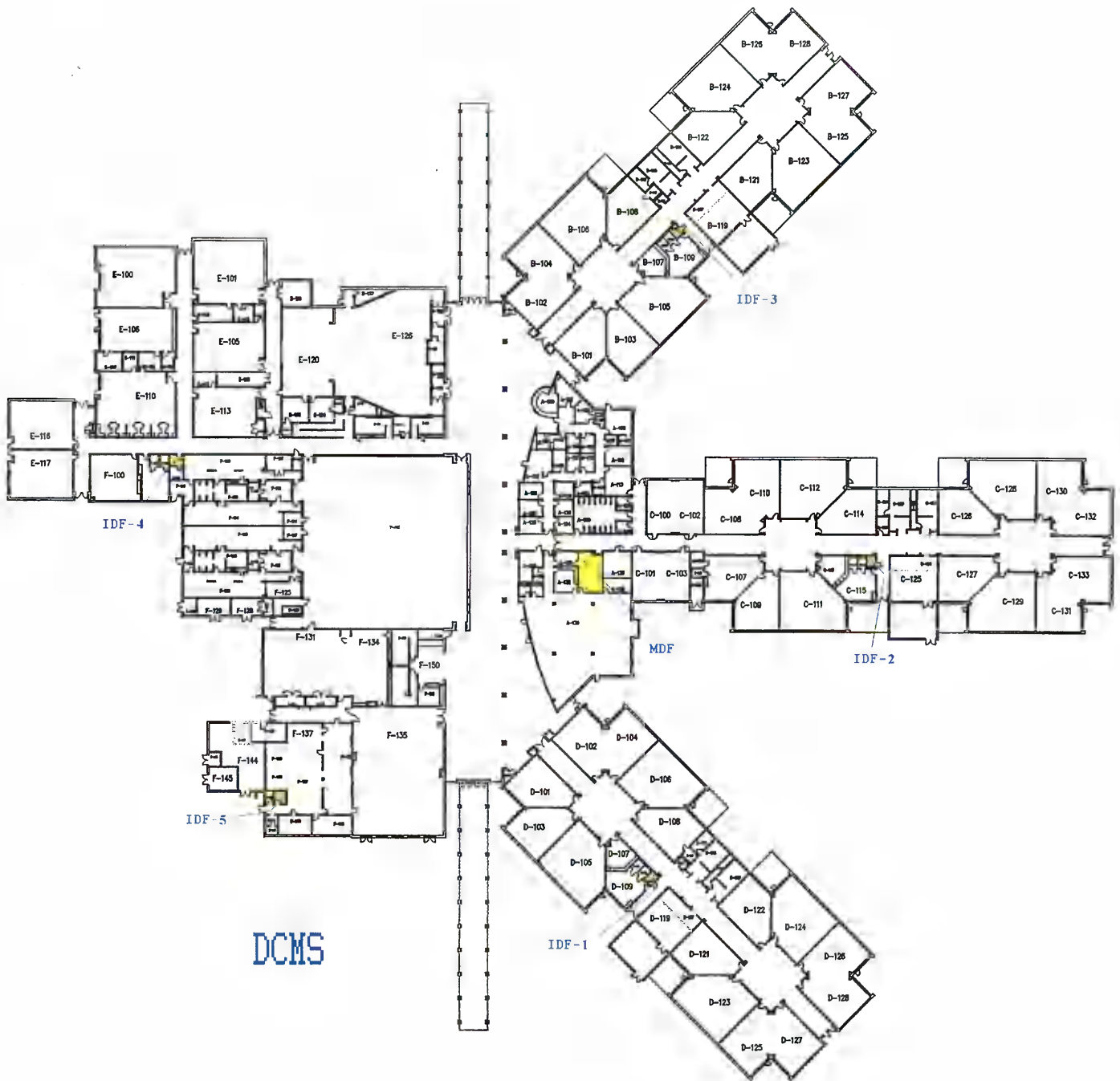


Northwestern High School





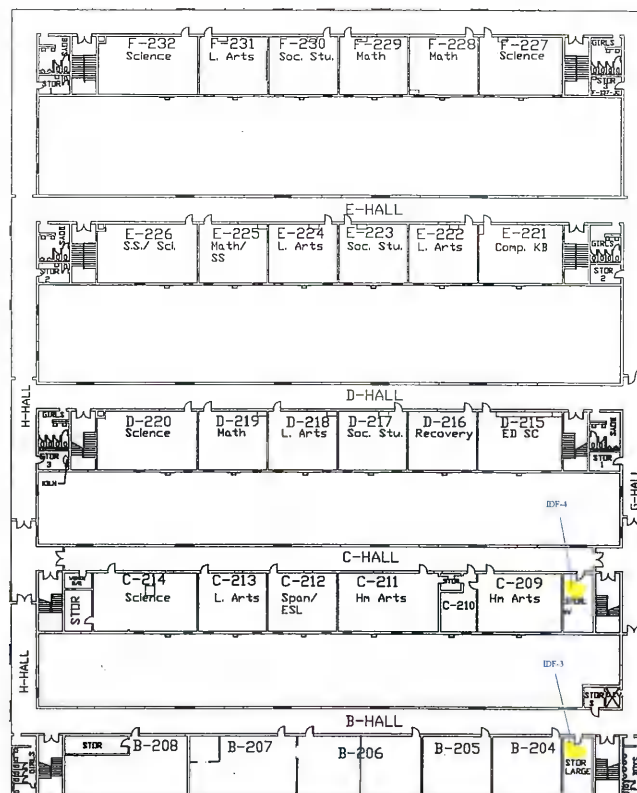
Dutchman Creek Middle School



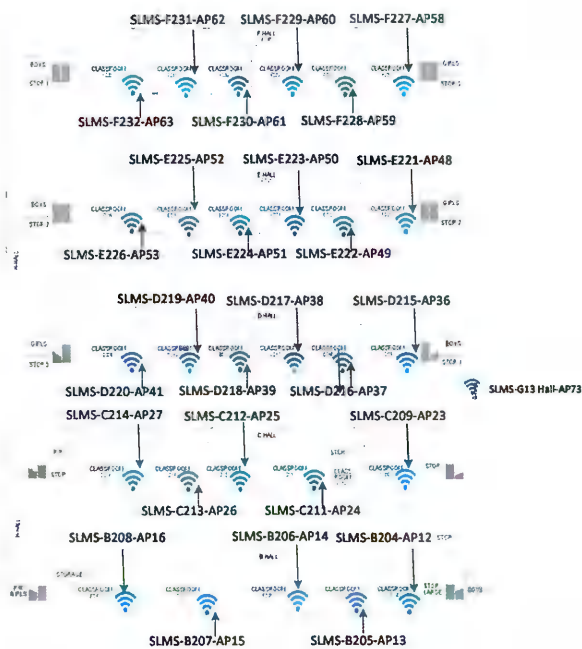
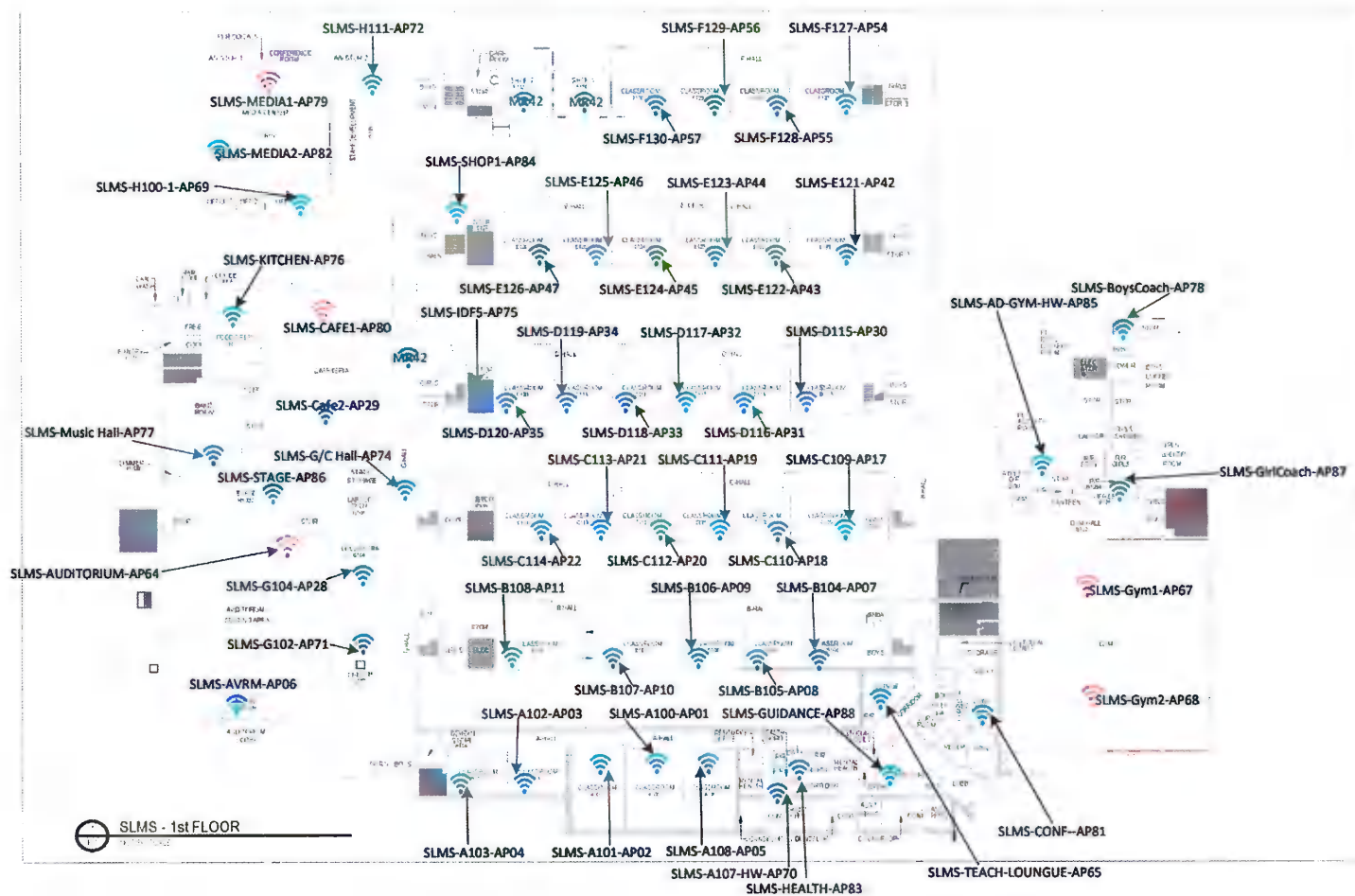
Dutchman Creek Middle School

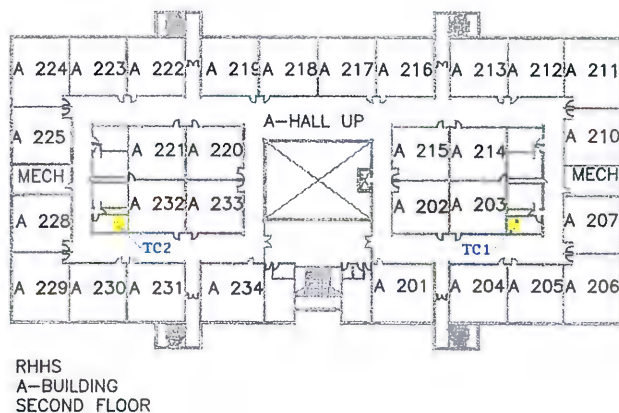


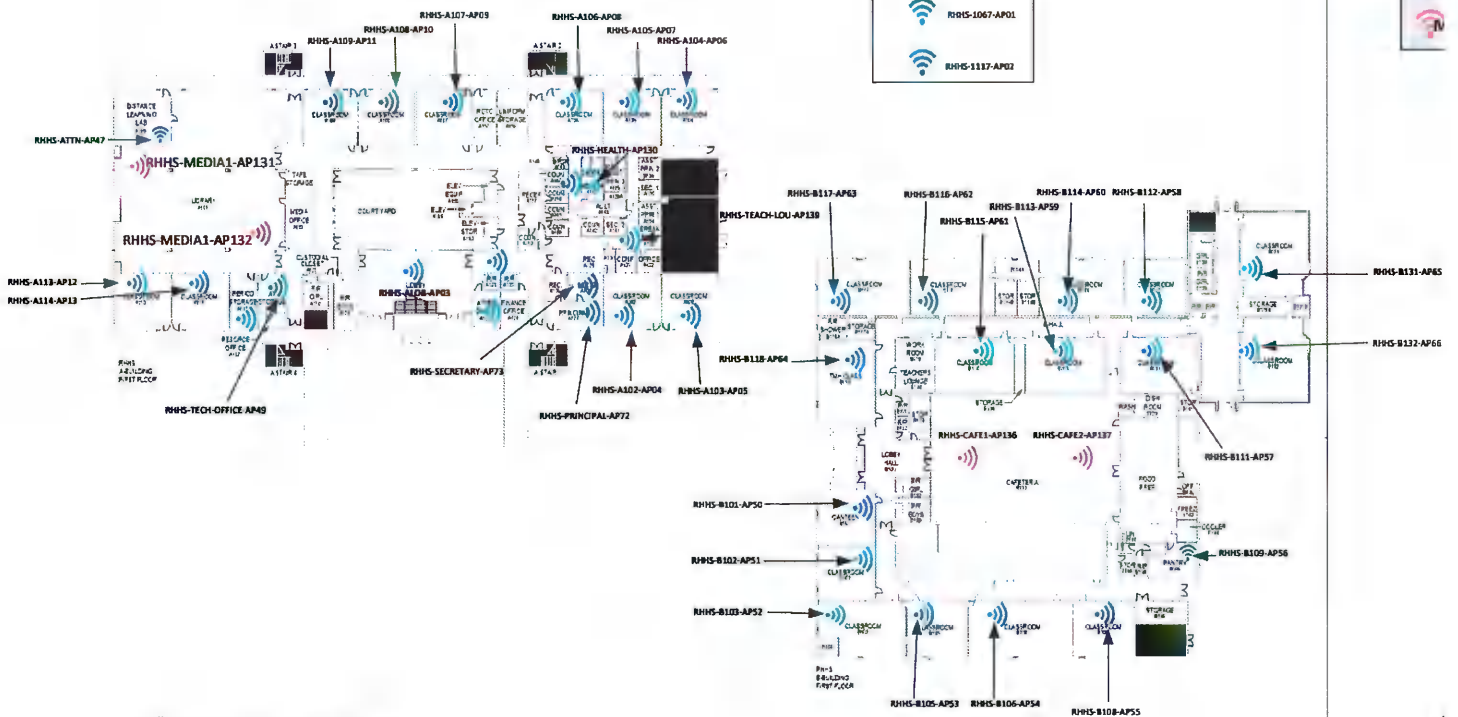
Sullivan Middle School

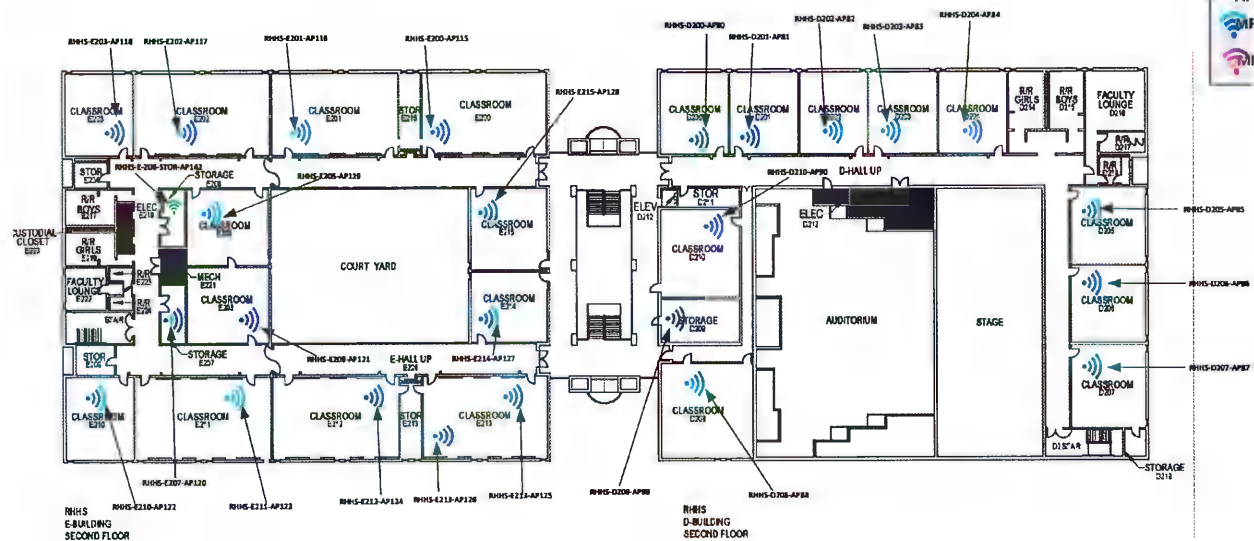


Sullivan Middle School

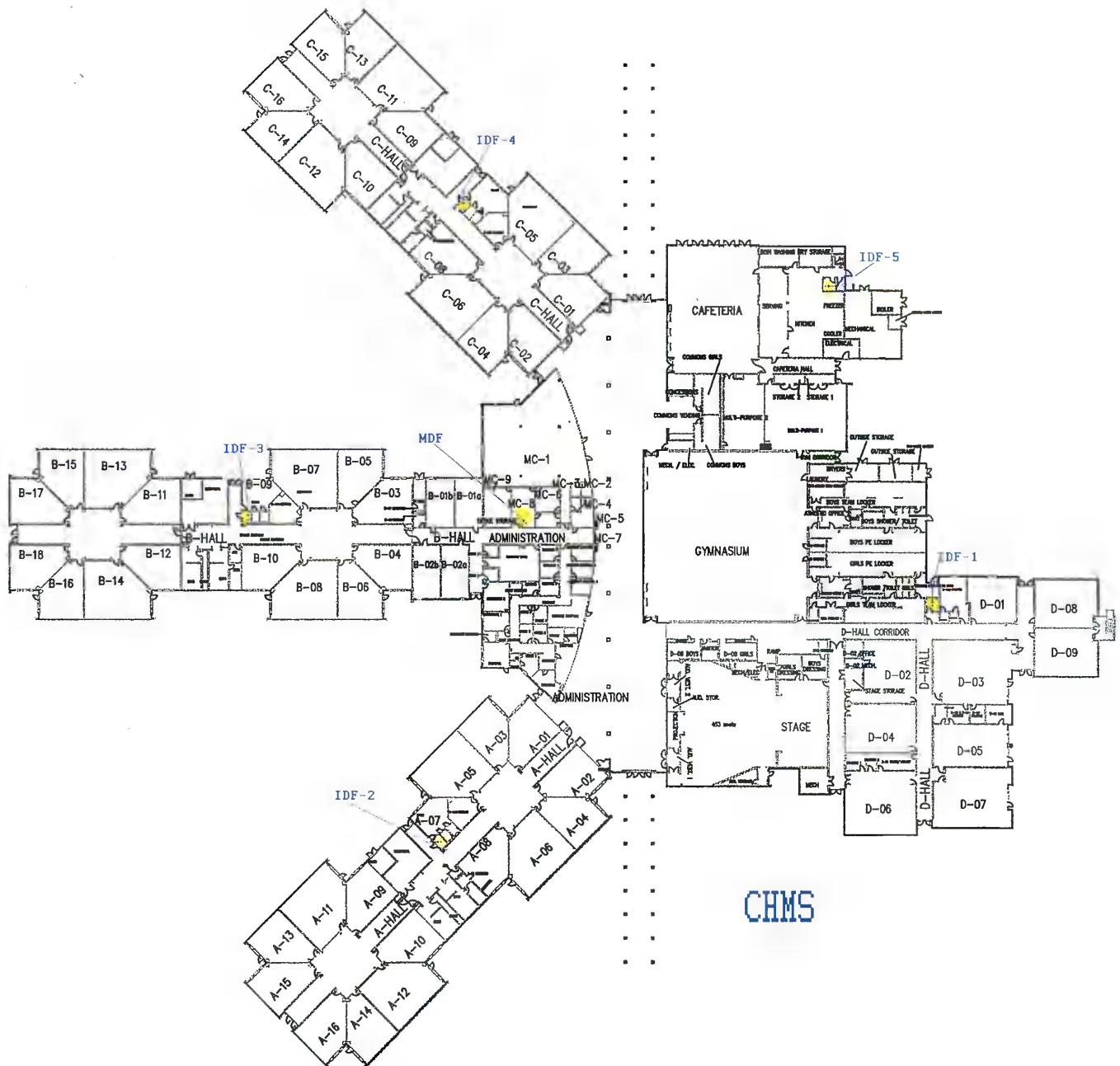




 RHHS-ATHLETIC-FIELD-AP141

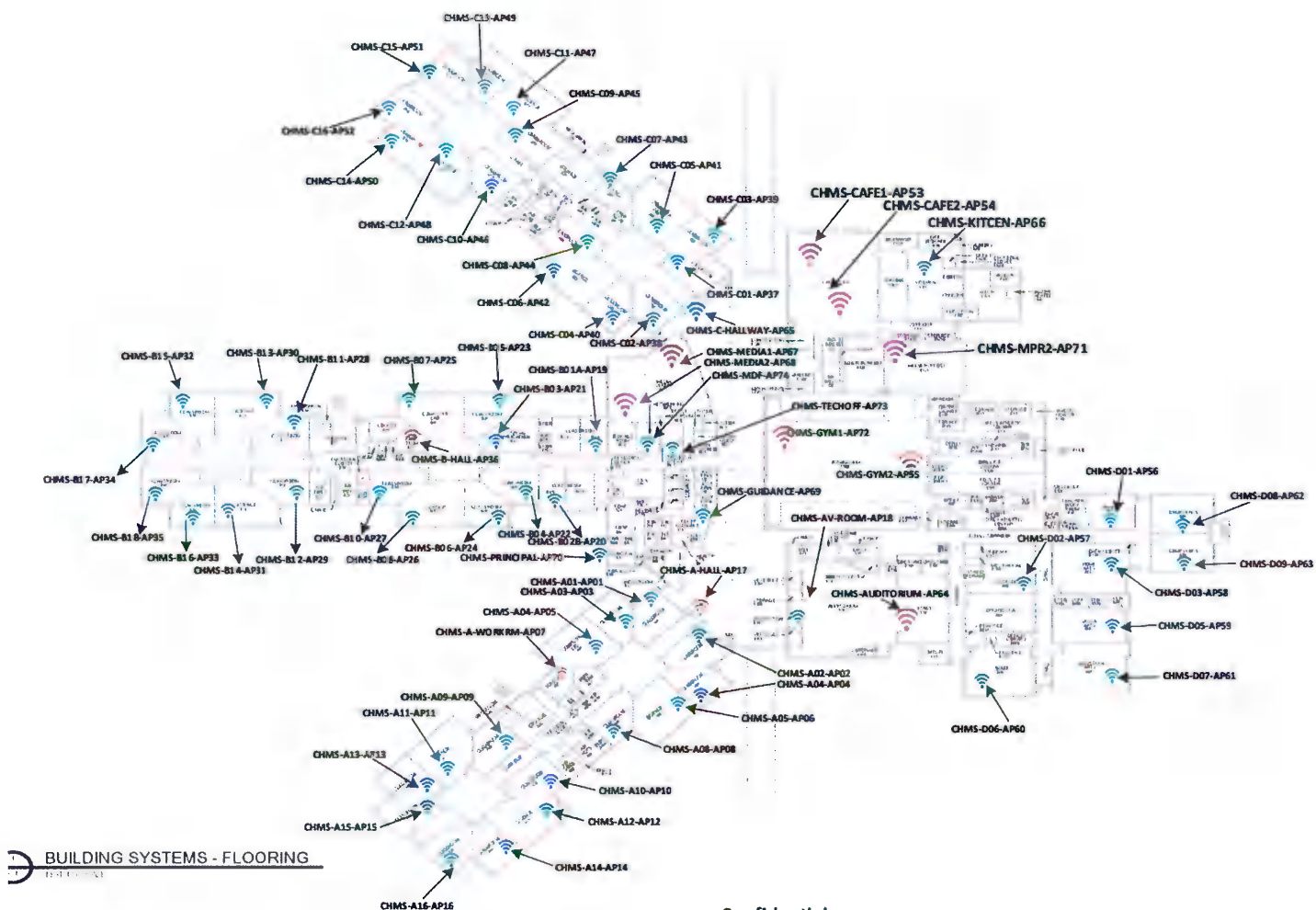


Castle Heights Middle School

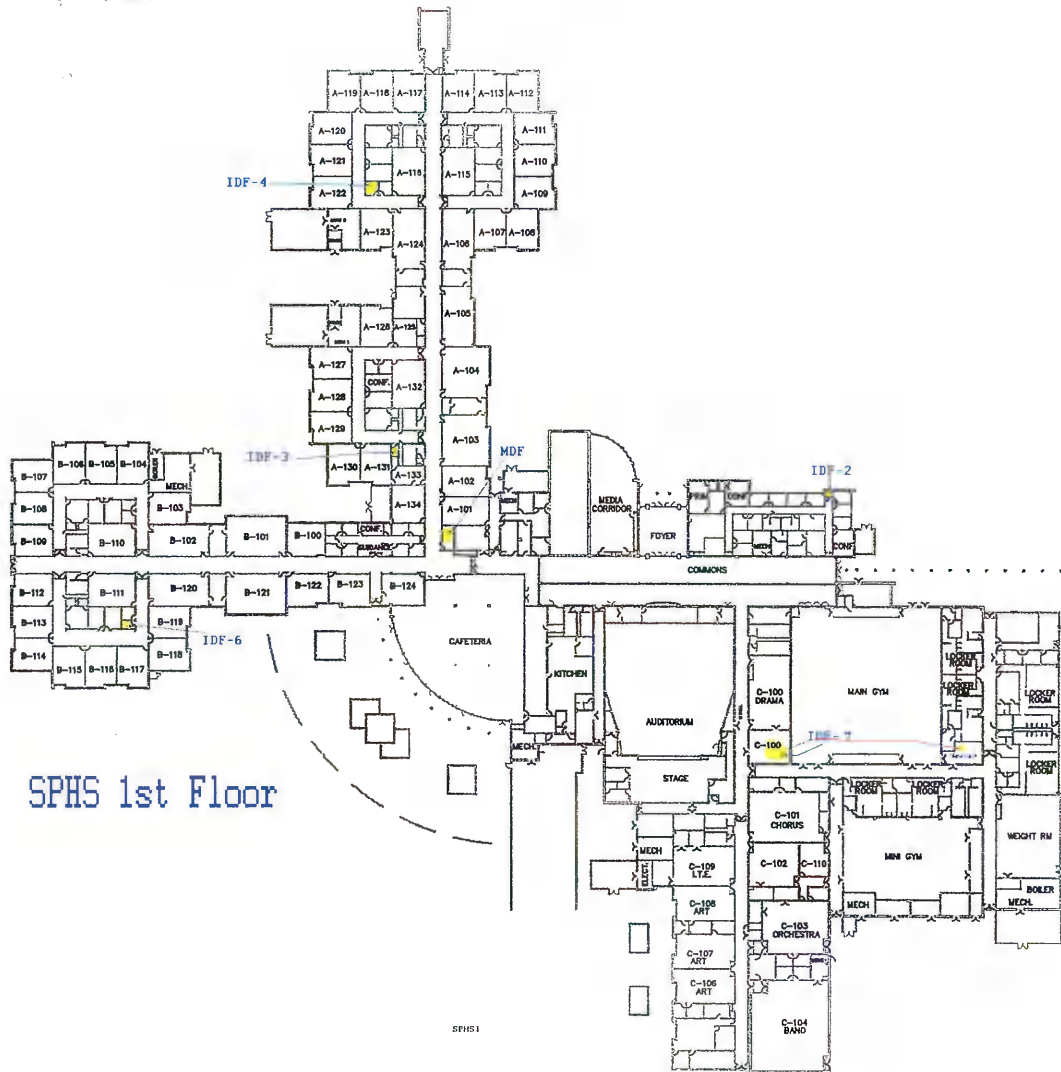


CHMS

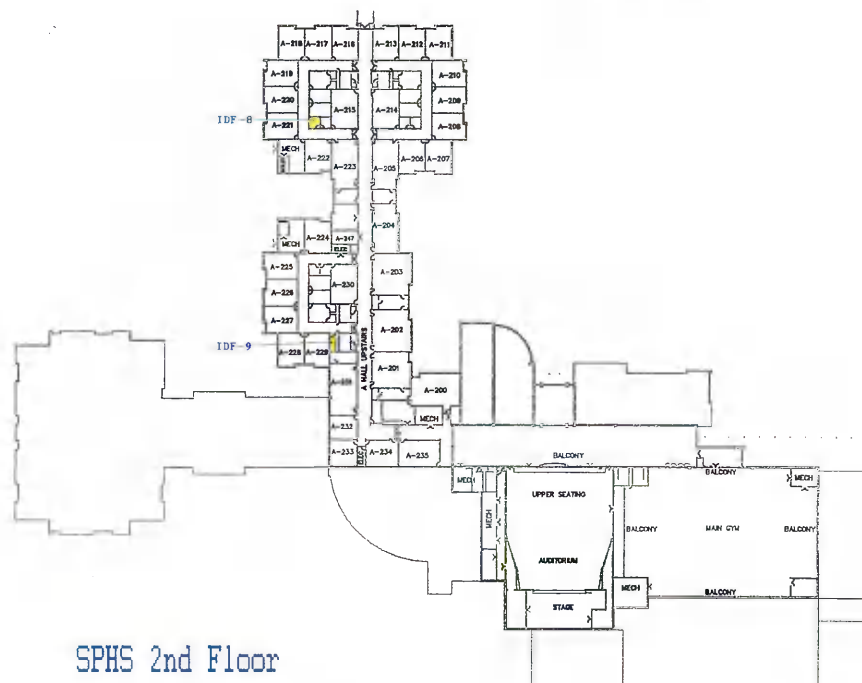
Castle Heights Middle School



South Pointe High School

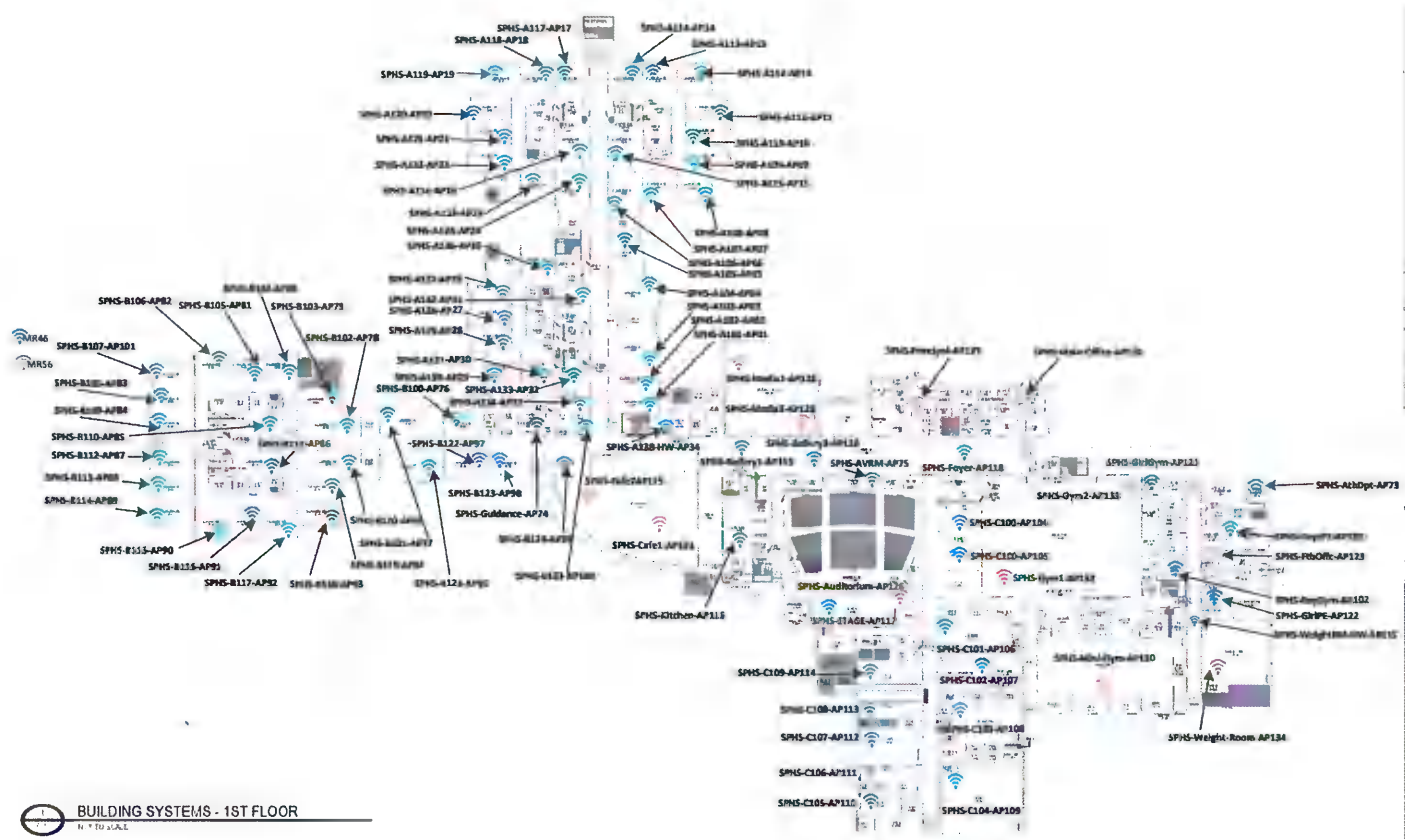


SPHS 1st Floor



SPHS 2nd Floor

Southpointe High School



EMS - 2ND FLOOR

